

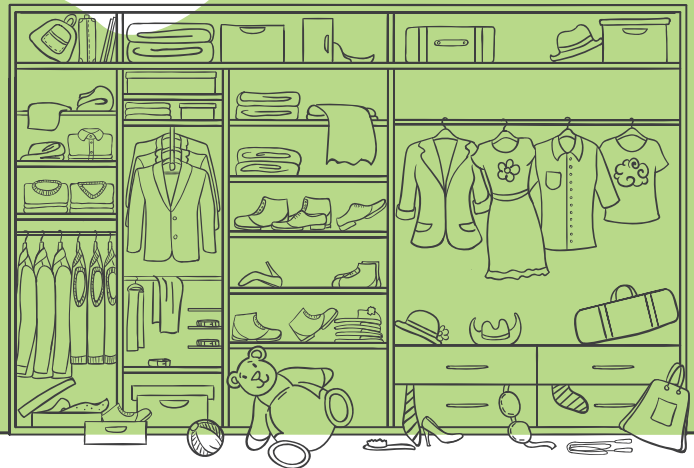
Art in Focus: The Lady in Green

We hope you enjoy exploring our temporary exhibition which focuses on the painting 'The Lady in Green' by Augustus John. The woman in the painting is Euphemia Lamb. She was the first wife of another famous artist who lived in Poole called Henry Lamb. The picture was created in Wales in the early 1900s, probably around the year 1911.



Design your own clothing

The colour green was very popular for women's clothing in the 1910s. Euphemia's green dress was highly fashionable and was a statement piece. During the Edwardian era, before the First World War, women wore elegant, opulent clothes which were much more colourful than previously worn. Felt hats were replaced with turbans, large brimmed and extravagant shapes. Inspiration was drawn from Asia with an appearance of kimono style dresses and lighter, silkier fabrics.



Use your imagination!

Have a go at designing your own pieces of clothing: